



**CIRCLE**  
  
**PRODUCTS, INC.**

# TECHNICAL BULLETIN

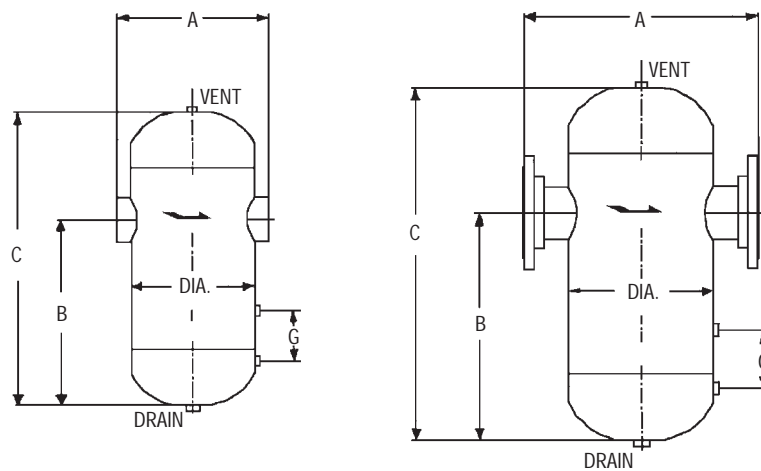
**TYPE:** Horizontal flow installations only  
**MODEL:** Dry-Flo™ T Moisture Separator  
 TB No. S3800

Date 1-99

Gas, laden with moisture, enters the inlet of the separator where a deflector plate directs the flow in a downward centrifugal motion. The entrained moisture is then separated out of the flow by a reduction in velocity. The separated liquid is sent to the outer walls of the separator and falls below the re-entrainment breaker plate where it is prevented for reentering the flow stream. A dry, clean flow then results, exiting upward through the outlet of the separator.

With correct sizing and proper drainage, these separators are designed to eliminate 99% of all entrained liquids and particles that are 10 microns and larger in size.

The Model "T" Separators can be fabricated from carbon steel or stainless steel and are manufactured in accordance with the ASME Code Section VIII, Division I.



### DIMENSIONS AND WEIGHTS

| PIPE SIZE | THREADED OR SOCKET WELD A | 150# & 300# FLANGED A | B       | C    | DIA.    | G       | NPT DRAIN | THREADED OR SOCKET WELD               | 150# FLANGED                    | 300# FLANGED                    |
|-----------|---------------------------|-----------------------|---------|------|---------|---------|-----------|---------------------------------------|---------------------------------|---------------------------------|
|           |                           |                       |         |      |         |         |           | DESIGN CUSTOMER SPECIFICATIONS WEIGHT | DESIGN 150 PSIG @ 450° F WEIGHT | DESIGN 500 PSIG @ 650° F WEIGHT |
| 1"        | 6 3/8"                    | 10 1/2"               | 10 1/2" | 16"  | 5 9/16" |         | 1"        | 29                                    | 33                              | 35                              |
| 1 1/4"    | 6 3/8"                    | 10 1/2"               | 10 1/2" | 16"  | 5 9/16" |         | 1"        | 30                                    | 35                              | 37                              |
| 1 1/2"    | 7 5/8"                    | 11 1/2"               | 12 1/2" | 19"  | 6 5/8"  |         | 1"        | 55                                    | 50                              | 56                              |
| 2"        | 7 7/8"                    | 11 1/2"               | 12 1/2" | 19"  | 6 5/8"  |         | 1"        | 57                                    | 55                              | 59                              |
| 2 1/2"    | -                         | 16"                   | 15"     | 22"  | 8 5/8"  |         | 1"        | -                                     | 100                             | 110                             |
| 3"        | -                         | 18"                   | 18"     | 26"  | 10 3/4" | 5 3/4"  | 1"        | -                                     | 140                             | 150                             |
| 4"        | -                         | 20"                   | 22"     | 31"  | 12 3/4" | 5 3/4"  | 1 1/2"    | -                                     | 195                             | 220                             |
| 5"        | -                         | 22"                   | 26"     | 36"  | 14"     | 7 7/8"  | 1 1/2"    | -                                     | 230                             | 290                             |
| 6"        | -                         | 24"                   | 30"     | 41"  | 16"     | 7 7/8"  | 1 1/2"    | -                                     | 350                             | 380                             |
| 8"        | -                         | 28"                   | 37"     | 50"  | 18"     | 7 7/8"  | 2"        | -                                     | 475                             | 610                             |
| 10"       | -                         | 34"                   | 55"     | 70"  | 24"     | 7 7/8"  | 2"        | -                                     | 780                             | 1180                            |
| 12"       | -                         | 38"                   | 58"     | 75"  | 28"     | 7 7/8"  | 2 1/2"    | -                                     | 940                             | 1510                            |
| 14"       | -                         | 42"                   | 60"     | 79"  | 32"     | 7 7/8"  | 2 1/2"    | -                                     | 1155                            | 2205                            |
| 16"       | -                         | 47"                   | 68"     | 89"  | 36"     | 7 7/8"  | 3"        | -                                     | 1605                            | 2785                            |
| 18"       | -                         | 54"                   | 85"     | 109" | 42"     | 9 1/8"  | 3"        | -                                     | 2260                            | 4370                            |
| 20"       | -                         | 62"                   | 99"     | 126" | 48"     | 9 1/8"  | 3"        | -                                     | 2845                            | 5635                            |
| 22"       | -                         | 64"                   | 102"    | 130" | 48"     | 10 1/4" | 3"        | -                                     | 3000                            | 6085                            |
| 24"       | -                         | 70"                   | 109"    | 140" | 54"     | 10 1/4" | 4" *      | -                                     | 4295                            | 7845                            |

\* Flanged Drain