



**CIRCLE  
S  
PRODUCTS, INC.**

# TECHNICAL BULLETIN

**TYPE:** Horizontal In / Vertical downflow installations

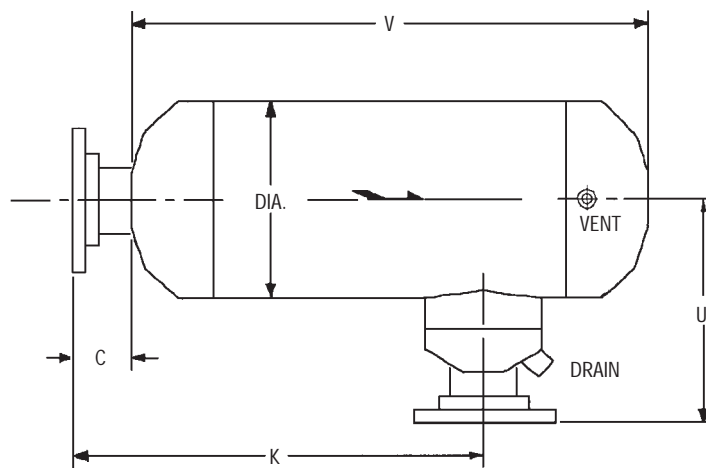
**MODEL:** Dry-Flo™ L4 Moisture Separator  
TB No. S3400

Date 1-99

Model "L4" Separators are designed for horizontal inlet and a vertical down outlet flow installation only. The stainless steel Separating Tuyere Diffuser causes the stream to enter a controlled centrifugal flow. Due to the centrifugal motion, entrained liquids and solids are directed to the outer walls of the separator. Re-entrainment breaker plates create a quiet inert zone to prevent liquid from reentering the flow stream once separation has taken place.

With correct sizing and proper drainage, these separators are designed to eliminate 99% of all entrained liquids and particles that are 10 microns and larger in size.

The Model "L4" Separators can be fabricated from carbon steel or stainless steel and are manufactured in accordance with the ASME Code Section VIII, Division I.



## DIMENSIONS AND WEIGHTS

| PIPE SIZE | C      | DIA.    | K       | U      | V    | NPT<br>DRAIN | 150#<br>FLANGED                | 300#<br>FLANGED                |
|-----------|--------|---------|---------|--------|------|--------------|--------------------------------|--------------------------------|
|           |        |         |         |        |      |              | DESIGN<br>150 PSIG<br>@ 450° F | DESIGN<br>500 PSIG<br>@ 650° F |
|           |        |         |         |        |      |              | WEIGHT                         | WEIGHT                         |
| 1 1/2"    | 2 1/2" | 5 9/16" | 15 1/2" | 8 1/2" | 20"  | 1"           | 45                             | 52                             |
| 2"        | 3"     | 6 5/8"  | 17"     | 10"    | 22"  | 1"           | 55                             | 61                             |
| 2 1/2"    | 3"     | 6 5/8"  | 17"     | 10"    | 22"  | 1"           | 63                             | 71                             |
| 3"        | 3"     | 8 5/8"  | 19"     | 11"    | 25"  | 1"           | 93                             | 107                            |
| 4"        | 4"     | 10 3/4" | 24"     | 14"    | 30"  | 1 1/2"       | 148                            | 179                            |
| 5"        | 4"     | 12 3/4" | 28"     | 15"    | 36"  | 1 1/2"       | 218                            | 259                            |
| 6"        | 4"     | 14"     | 31"     | 17"    | 40"  | 1 1/2"       | 256                            | 321                            |
| 8"        | 5"     | 16"     | 40"     | 19"    | 50"  | 2"           | 420                            | 498                            |
| 10"       | 5"     | 20"     | 47"     | 22"    | 59"  | 2"           | 529                            | 864                            |
| 12"       | 5"     | 24"     | 54"     | 25"    | 68"  | 2 1/2"       | 730                            | 1262                           |
| 14"       | 5"     | 28"     | 60"     | 28"    | 76"  | 2 1/2"       | 1076                           | 1738                           |
| 16"       | 5"     | 30"     | 68"     | 29"    | 86"  | 3"           | 1202                           | 2792                           |
| 18"       | 6"     | 36"     | 77"     | 33"    | 96"  | 3"           | 1539                           | 2998                           |
| 20"       | 6"     | 36"     | 83"     | 34"    | 104" | 4" *         | 1769                           | 5028                           |
| 22"       | 6"     | 42"     | 90"     | 38"    | 114" | 4" *         | 2665                           | 5369                           |
| 24"       | 6"     | 42"     | 101"    | 38"    | 126" | 4" *         | 3076                           | 6388                           |

\* Flanged Drain

PHONE 734-675-2960

FAX 734-675-6577

www.dryflo.com